



# BIM MANAGEMENT

KEEPING CONSTRUCTION PROJECTS ON TIME.

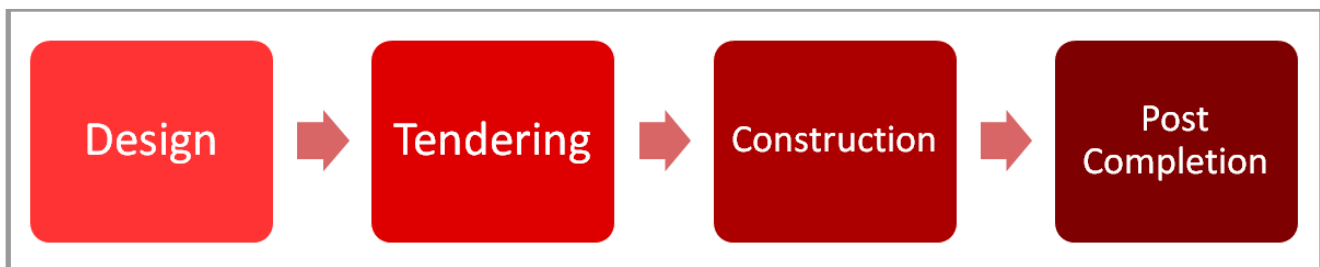
*Teamwork - one goal'*



# BIM MANAGEMENT

When a range of disciplines come together to work on different aspects of the construction projects with data from a multitude of models coming together to form a master model, the existence of conflicts and clashes is inevitable.

FC International performs BIM Management during all the stages of the construction projects to coordinate all design disciplines and to ensure that projects are completed on time and budget.



## KEY ACTIVITIES

- We test the feasibility and constructability before costs and resources are committed during the early stages.
- We properly document the project's construction details to meet the local authorities' requirements and building codes during the design phase.
- We facilitate the collaboration between the construction stakeholders and the design team
- We coordinate all design disciplines and detect/resolve clashes which if left unresolved will result in substantial delays and costs overrun during the whole project.
- We coordinate and manage all trades and subcontractors and facilitate the construction process.

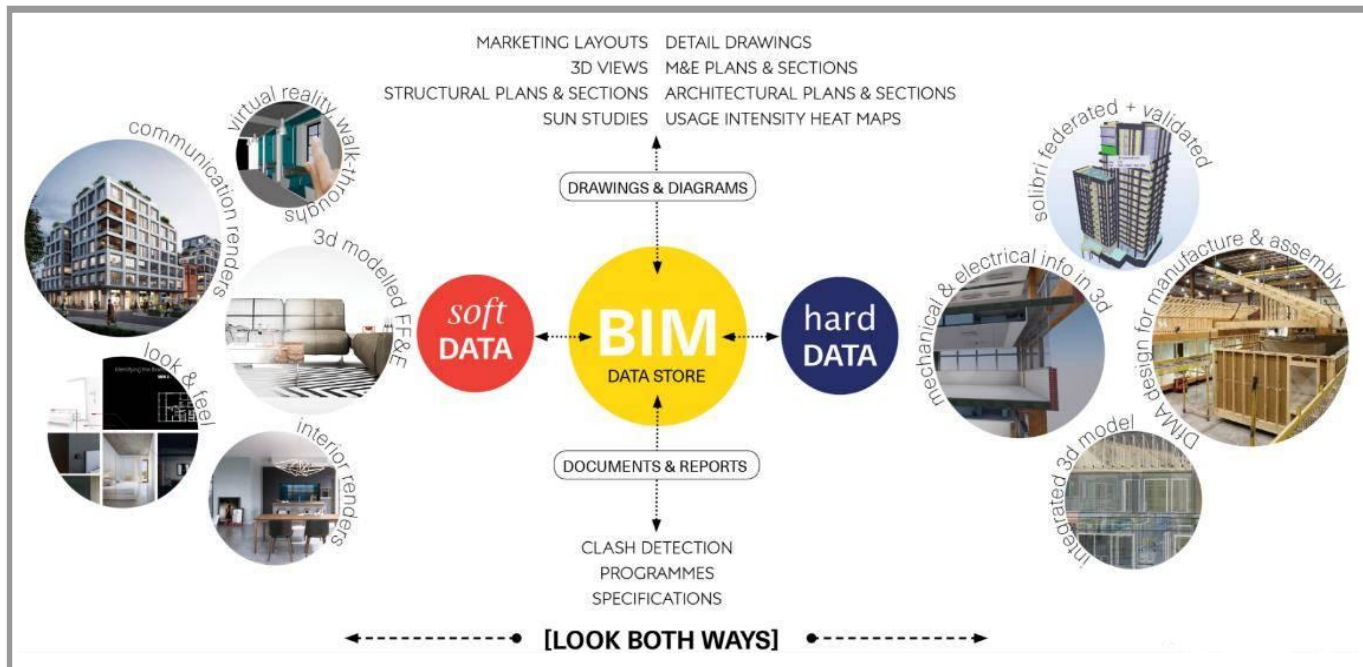
FC International has proven record in coordinating the input of the design consultants by acting as **Independent BIM Manager** and, performing **Clash Detection** & resolution processes and, performing **4D Planning**.

# Independent BIM Management

The role of FC International as an Independent BIM Manager is to coordinate and combine all project inputs and models (architectural, structural and services) into a unique coordinated model that contains consistent and structured information/data.

FCI identifies and prevents problems between all the disciplines involved before they arise, as a result of more precise design and trade coordination, automated conflict avoidance, more straightforward design interpretation, greater accuracy, and fewer change orders.

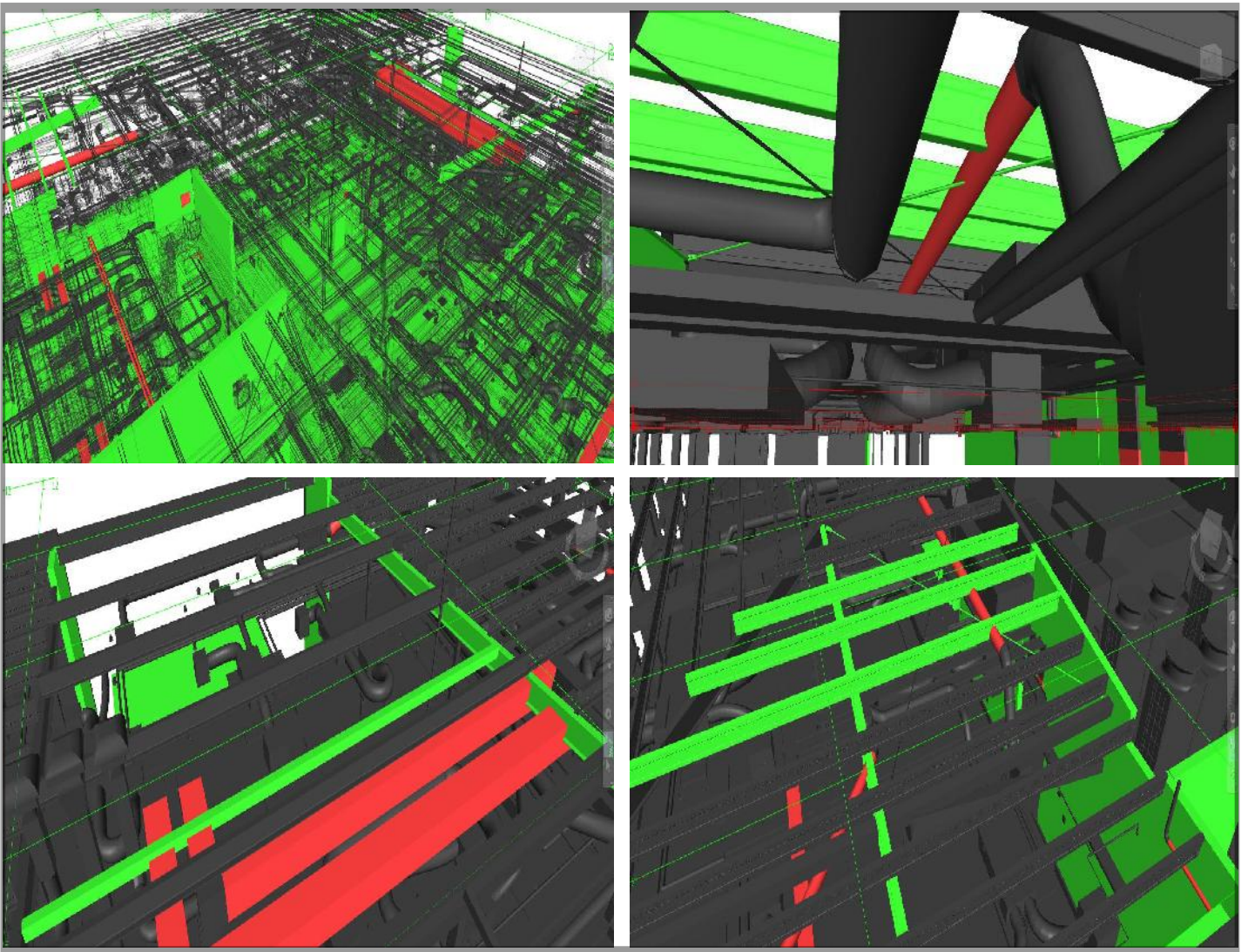
The main benefit of coordinating a construction project by FC International as Independent BIM Manager is that FC International is not associated with any design consultants which means our main interest is the project success rather than getting the job done fast and cheap.



# Clash Detection

Every master model is integrated by several models and, the Clash Detection process is fundamental to ensure there are no clashes and incompatibilities between those models.

FC International conducts very thorough clash detection analysis between all disciplines and manages the clash resolution process. We provide detailed visual and tabular reports that help the design team trace back each clashing component and resolve the coordination issue with all other disciplines.



# Key Benefits- BIM Management Services

- Boost productivity and quality
- Minimize project management
- Better communication and co-ordination between stakeholders
- Reviewing, communication and co-operation in a digital and interactive visual environment
- Better coordination in the virtual model lead to better coordination during construction resulting in less waste and greater efficiency
- Reduce & eliminate unnecessary costs (variations)
- Clash detection and resolution during the design phase
- Model updates in real-time to reflect changes and avoid clashes
- Real-time performance monitoring-Live reports
- Create and manage building and infrastructure assets faster
- Better planning of site activities and optimization of the construction sequence

## CONTACT US

If you are interested in our BIM Management services, please call us on: **+64 800 333 009** or email us: **info@fsc-intl.com**

### FC INTERNATIONAL LIMITED

**Office address:**

Level 7, 56 Cawley Street, Ellerslie, Auckland

**Postal address:**

PO Box 11673, Ellerslie, Auckland 1542



*Teamwork,  
- one goal'*

[www.fcinternational.co.nz](http://www.fcinternational.co.nz)